

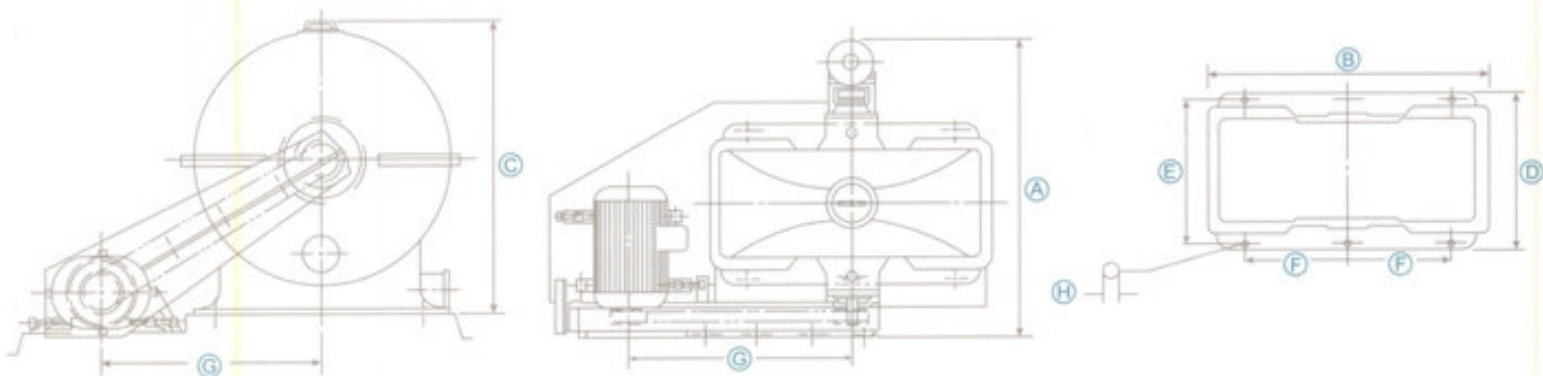
NSC 8000 AND NSC 10000 SLUDGE CENTRIFUGES



This new generation of dish end type sludge centrifuge has been specially designed (Malaysia Patent No. MY-116016-A) to reclaim the palm oil present in the sludge water from the clarifying plant. These 12 and 14 nozzles centrifuges with capacity of 8000 litres and 12000 litres respectively are made from exceptionally high grade materials to withstand the presence of sand and other impurities in the sludge water. (Refer to the specification table for details)

FEATURES

1. Higher capacity with lower power consumption and space requirement.
2. Revolutionary new design in horizontal shaft centrifuge separator.
3. Innovative dish bowl design allows higher capacity at minimal increase in drive requirement.
4. High efficiency in oil recovery.
5. Simple operation procedure which will easily adapt to your present operator.
6. Lower wear on bowl exterior surface due to its streamlined profile.
7. Simple and robust design means minimal maintenance, no special tools or highly skilled personnel required.
8. Few wear parts equate low maintenance cost.



INSTALLATION / SHIPPING DATA (All dimension are in millimeters)

Model	A	B	C	D	E	F	G	H	Wgt(Kg)	Shipping Vol (m3)
NSC 8000	1240	1340	1400	770	690	500	1400	27	1700	5.6
NSC 10000	1640	1560	1720	980	860	600	1600	27	2400	6.5

SPECIFICATIONS

Model	NSC 8000	NSC 10000
Capacity (Ltr/Hr)	8000	10000 - 12000
Motor (kW)	15	22
Fluid Coupling	11 KSD	12 KSD
No. of Nozzle	12	14
Rotor Material	Stainless Steel 304	
Rotor Speed (Rpm)	1450	
Bearing	SKF or equivalent	
Nozzle	1.7mmØ - 2.0mmØ Tungsten Carbide	
Body Casing	Cast Iron	
Media Parts	Stainless Steel 304	

PERFORMANCES

Oil loss (Wet Basis) : Below 1%
Oil to NOS : Below 12%

Modipalm Engineering Sdn. Bhd. reserves the right to change all specifications and dimensions without prior notification.

Distributed by:



MODIPALM ENGINEERING SDN. BHD. (210753-U)
(A wholly owned subsidiary of CB Industrial Product Holding Berhad)
Lot 3 & 4, Jalan Waja 15, Kawasan Perusahaan Telok Panglima Garang,
42500 Telok Panglima Garang, Selangor Darul Ehsan. MALAYSIA.
Tel: (6) 03 - 3122 7117, 3122 8899 (Gen. Line)
Fax: (6) 03 - 3122 7152, 3122 9152
Email: info@modipalm.com.my

Visit our website: www.modipalm.com.my