

SC 3000 AND SC 6000 SLUDGE CENTRIFUGES

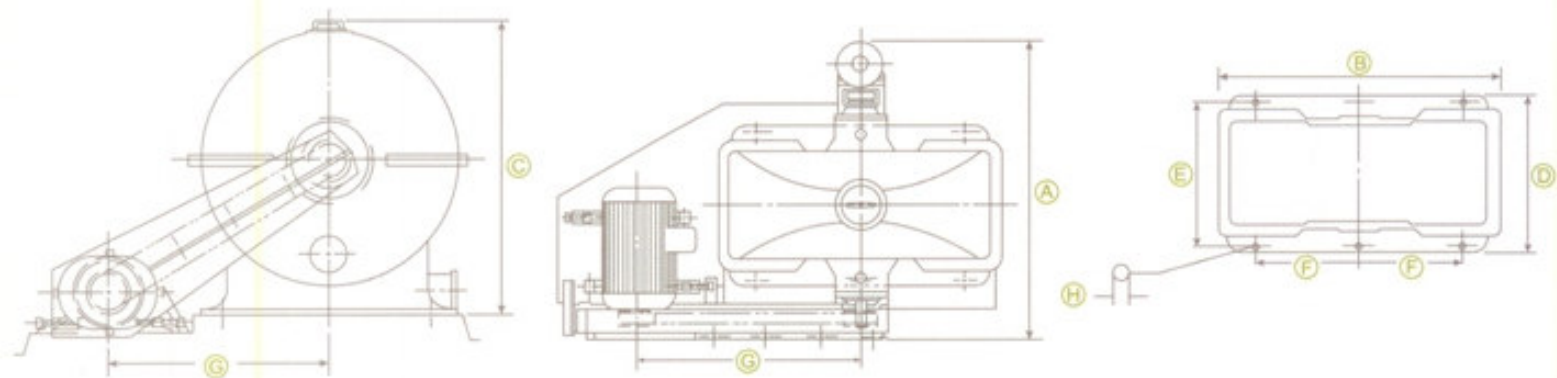


The star bowl type sludge centrifuges have been widely used to recover the palm oil present in the sludge water. These 4 and 6 nozzles have capacity of 3000 litres and 6000 litres respectively. With the special design and high grade materials used, these centrifuges can withstand heavy wear due to presence of sand and other impurities in the sludge water.

(Refer to the specification table for details)

FEATURES

1. Revolutionary design in horizontal shaft centrifuge separator.
2. High efficiency in oil recovery.
3. Simple operation procedure which will easily adapt to your present operator.
4. Simple and robust design means minimal maintenance or highly skilled personnel required.
5. Low maintenance cost.



INSTALLATION / SHIPPING DATA (All dimension are in millimeters)

Model	A	B	C	D	E	F	G	H	Wgt(Kg)	Shipping Vol (m3)
SC 3000	1240	1340	1400	770	690	500	1400	27	1700	5.6
SC 6000	1640	1560	1720	980	860	600	1600	27	2400	6.5

SPECIFICATIONS

Model	SC 3000	SC 6000
Capacity (Ltr/Hr)	3000	6000
Motor (kW)	11	22
Fluid Coupling	11 KSD	12 KSD
No. of Nozzle	4	6
Rotor Material	Stainless Steel 304	
Rotor Speed (Rpm)	1450	
Bearing	SKF or equivalent	
Nozzle	1.7mmØ - 2.0mmØ Tungsten Carbide	
Body Casing	Cast Iron	
Media Parts	Stainless Steel 304	

PERFORMANCES

Oil loss (Wet Basis) : Below 1%
Oil to NOS : Below 12%

Modipalm Engineering Sdn. Bhd. reserves the right to change all specifications and dimensions without prior notification.

Distributed by:



MODIPALM ENGINEERING SDN. BHD. (210753-U)
(A wholly owned subsidiary of CB Industrial Product Holding Berhad)
Lot 3 & 4, Jalan Waja 15, Kawasan Perusahaan Telok Panglima Garang,
42500 Telok Panglima Garang, Selangor Darul Ehsan. MALAYSIA.
Tel: (6) 03 - 3122 7117, 3122 8899 (Gen. Line)
Fax: (6) 03 - 3122 7152, 3122 9152
Email: info@modipalm.com.my

Visit our website: www.modipalm.com.my